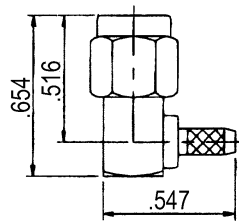


REVERSE POLARITY SMA: Flexible Cable-Crimp Attachment

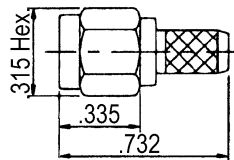
Right Angle Plug, Crimp



Part Number	Cable
258-900-0630Y	RG-174,188A,316
258-900-1160Y	RG-58,58A,141A
258-900-1161Y	RG-142

• See page 119 for cable assembly procedures: CM-06

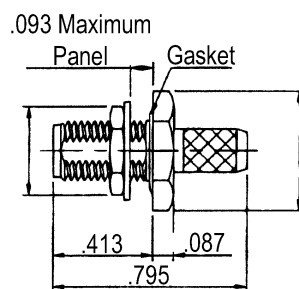
Straight Plug, Crimp



Part Number	Cable
256-900-0630Y	RG-174,188A,316
256-900-1160Y	RG-58,58A,141A
256-900-1161Y	RG-142

• See page 116 for cable assembly procedures: CM-03

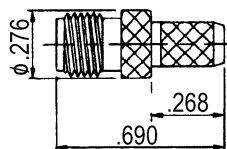
Straight Bulkhead Jack,



Part Number	Cable
257-975-0630Y	RG-174,188A,316
257-975-1160Y	RG-58,58A,141A
257-975-1161Y	RG-142

• See page 116 for cable assembly procedures: CM-03

Straight Jack, Crimp

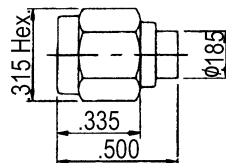


Part Number	Cable
257-900-0630Y	RG-174,188A,316
257-900-1160Y	RG-58,58A,141A
257-900-1161Y	RG-142

• See page 116 for cable assembly procedures: CM-03

REVERSE POLARITY SMA: Semi-Rigid Cable Direct Solder

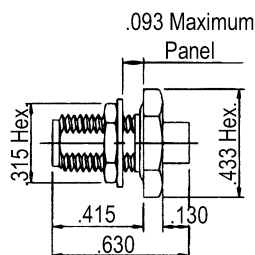
Straight Plug



Part Number	Cable
256-500-1410Y	RG-402 (.141")
256-500-0850Y	RG-405 (.085")

• See page 115 for cable assembly procedures: CM-01

Straight Bulkhead Jack



Part Number	Cable	Mounting Hole
257-575-0850Y	RG-405 (.085")	No. 075
257-575-1410Y	RG-402 (.141")	No. 075

• See page 115 for cable assembly procedures: CM-01
• See page 83 for mounting hole layout.

Note: Dimensions shown in inches.

Winchester/Retconn

400 Park Road • Watertown, Connecticut 06795-5000 • Phone: (860) 945-5000 • FAX: (860) 945-3950 • Internet: <http://www.litton-wed.com>